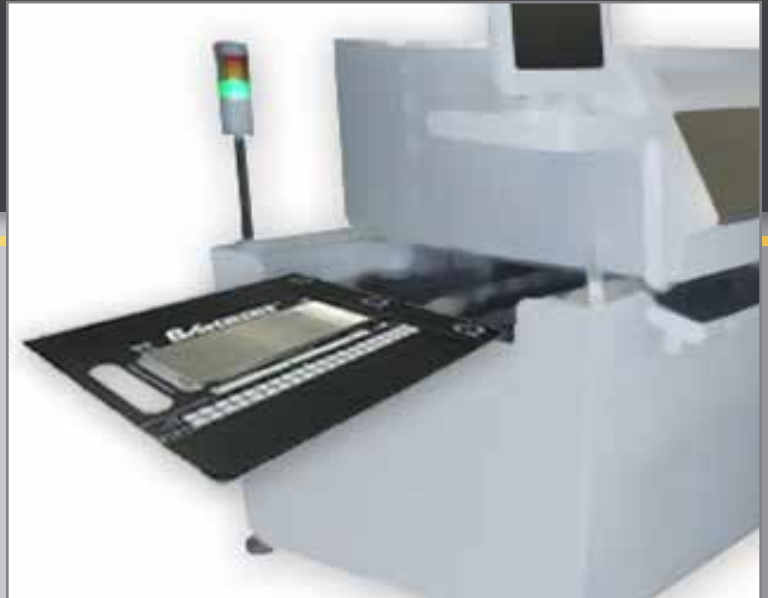


# OvenCHECKER™

Reflow Process Verification... made Easy!



ECD, the world leader in thermal profiling solutions, introduces an easy to use yet powerful tool for verifying a production reflow oven - OvenCHECKER™.

Built around ECD's award winning V-M.O.L.E.® Thermal Profiler, the OvenCHECKER™ system comes complete with the profiler, thermal barrier, pallet with 3 surface sensors and M.O.L.E.® MAP software, making it a complete solution for reflow oven verification.

[www.ecd.com/products/ovenchecker](http://www.ecd.com/products/ovenchecker)

Perfect Score = 10

Zone	1	2	3	4	5	6	7	8	9	10	11	12	13	14	15	16	17	18	19	20
Temperature (C)	155	183	183	183	183	183	183	183	183	183	183	183	183	183	183	183	183	183	183	183
Time Above Liquidous (sec)	77.6	69.6	56.0	65.0	4.5	222.2	213.0	214.8	223.5	224.9	224.9	224.9	224.9	224.9	224.9	224.9	224.9	224.9	224.9	224.9
Peak - Temperature (C)	8.9	3.3	5.6	8.9	3.3	5.6	8.9	3.3	5.6	8.9	3.3	5.6	8.9	3.3	5.6	8.9	3.3	5.6	8.9	3.3

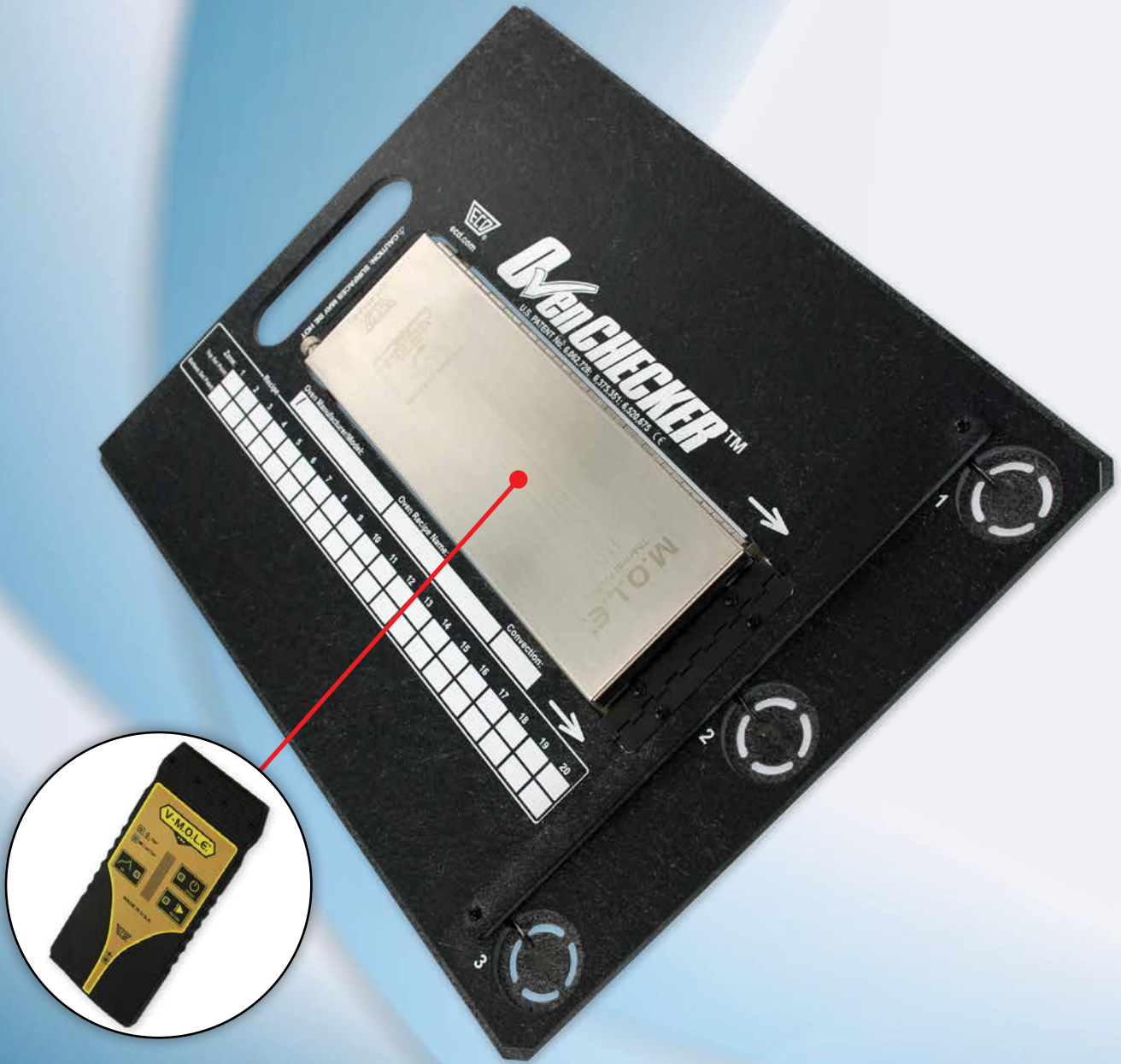
1.9 ELECTRONICS

BAKING FOOD/BAKING

SOLAR

INDUSTRIAL

The EASIEST way known to “Verify” a reflow oven profile!



*Excellence in Measurement Solutions Worldwide*



## V-M.O.L.E.® THERMAL PROFILER

Innovative “OK Button” feature, indicating **Go/No-Go** (relative to your profile specifications) at the touch of a button



## THERMAL BARRIER

Thermal protective barrier for the V-M.O.L.E.®. Removable so it can be used for standard Thermal Profiling.



## 3 SURFACE SENSORS

Similar in profile to FR4 PCB

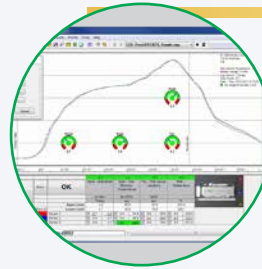


## EASY TO USE

### 1: SPECIFY ✓

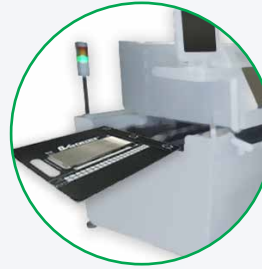
Engineer sets specifications in MAP software for profile:

- Ramp
- Soak
- TAL
- Peak



### 2: RUN ✓

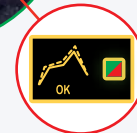
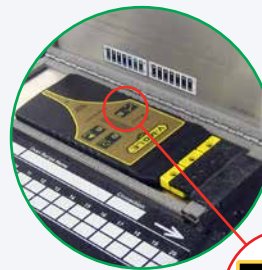
Operator sends the OvenCHECKER™ through the oven.



### 3: VERIFY ✓

Operator presses the “OK” button.

- **Green = Go**
- **Red = Stop**



## M.O.L.E.® MAP SOFTWARE

Create a Target-10™ specification file using the OvenCHECKER™

which provides:

- A simple color “Go/No-Go” test criteria
- Analog gauges for intuitive data interpretation
- Drill down Data for engineering analysis
- Configurability, so you can delegate decision-making

“Verify” your process using the OvenCHECKER™ by pressing the OK button.

ECD-exclusive “OK Button” makes for quick work of assessing profile to be IN or OUT of specification.

If you...

- Need to verify your oven profile,
- Need to train multiple production operators to profile,
- Need to delegate Go/No-Go decisions to increase your own productivity
- Desire easy to understand, objective data - which removes interpretation

... you need OvenCHECKER™



# SPECIFICATIONS

## PHYSICAL: OvenCHECKER™

- Length (Pallet):** 15.0in. [38.1cm]  
**Height (Thermal Barrier):** 2.54cm [1.0in.]
- 17.8mm [0.7"] above conveyor chain
  - 7.6mm [0.3"] below conveyor chain
- Width (Pallet):** 30.5cm [12in.]  
**Weight (Pallet):** 1656 grams [3.65 lbs.]  
**Pallet Surface Sensor Thickness:** 1.58mm [0.062in.]  
**Max. Operational Temperature (Pallet):** 300°C [572°F]  
**Max. Operational Temperature (Thermal Barrier):**
- 200°C [392.0°F] for 10 min.
  - 150°C [302.0°F] for 15.8 min.

## PHYSICAL: V-M.O.L.E.®

- Dimensions (L x W x H):**
- 145mm [5.7"] x 64mm [2.5"] x 7.62mm [.3"]
- Weight:**
- Profiler: 0.068 kg [2.4 oz]
- Max. Operational Range:** -40°C to +85°C [-40°F to 185°F]  
**Power Supply:** USB Rechargeable Lithium Polymer

## DATA ACQUISITION: V-M.O.L.E.®

- Sampling Interval:** 0.1 seconds to 24 hours  
**Data points:** 500,000 total for 3 channels  
**Data runs stored:** 96 (Standard Thermal Profiles)  
**Accuracy:** +/- 1°C [1.8°F]  
**Resolution:** 0.056°C [0.1°F]  
**Measurement range:** -200°C to 1271°C [-328°F to 2320°F]

## PATENT

U.S. PATENT No. 6,062,728; 6,375,351; 6,520,675

## WARRANTY

1 year parts and labor

## WEBSITE

[www.ecd.com](http://www.ecd.com) ➔

## SYSTEM KITS:

### OvenCHECKER™ Standard System

- 12 in. [305 mm] wide pallet
- P/N: E49-2435-02

### OvenCHECKER™ Custom System

- 7.5" to 18" [190 mm to 458 mm] wide pallet
- P/N: E49-2435-12

## KITS INCLUDE:

### OvenCHECKER™ Pallet

- Includes 3 sensors & Thermal Barrier

### V-M.O.L.E.® Profiler

- With USB rechargeable battery

### M.O.L.E.® MAP Software

### PC USB 2.0 Cable

- Set-up, Download & Charging

### Quick Reference Guide

### Carrying Box

1 year warranty on materials and workmanship

## OPTIONS:

**OvenCHECKER™ Pallet Kit:** Pallet, Quick Reference Guide, Carrying Box & 1 year warranty on materials and workmanship



ECD North & South America  
World Headquarters  
4287-B SE International Way  
Milwaukie, Oregon 97222-8825 U.S.A.  
Tel: +1 503 659 6100/+1 800 323 4548  
Fax: +1 503 659 4422  
E-Mail: sales@ecd.com | Web: www.ecd.com

ECD Asia/Pacific  
Singapore  
Mobile: +65 9692 6822  
Fax: +65 6241 9890  
E-Mail: ecd.asia@ecd.com

ECD Europe/Africa/Middle East  
Mobile: +48 512 659 100  
E-Mail: ecd.europe@ecd.com

• Top rated customer support • No-cost ECD Online Training • Award winning software •