

The chuckling bit is the ideal tool to automatically pick up screws and vastly improve work efficiency when fastening screws made of nonferrous metals such as stainless steel and brass that cannot be used with a magnetic driver attachment, or fastening work pieces in areas where air suction cannot be used.

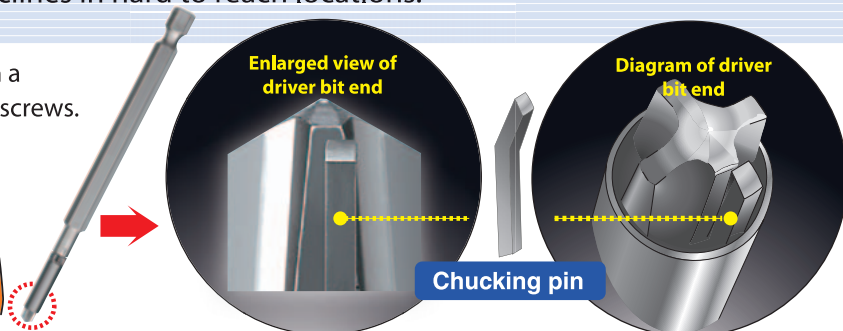


- A unique chucking method using our own leaf spring design is employed to reliably take screws to their fastening position.
- The screw will not unexpectedly drop out from the driver bit. This improves ease of use and takes work efficiency to a whole new level.
- Ideal for fastening screws at angles or inclines in hard to reach locations.

One of the four wings is removed and replaced with a chucking pin (leaf spring design) to reliably pick up screws.

Regular replacement of the pin is recommended to maintain the chucking force.

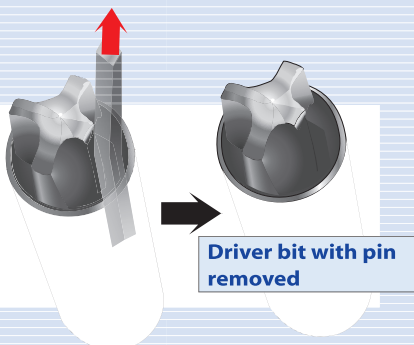
Replacement chucking pins can be purchased as spare parts.



Easy replacement of chucking pin

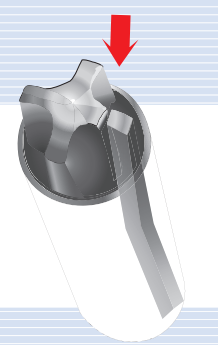
① Removal

Grasp the pin lightly with pliers and pull upwards.



② Attachment

Hold the pin with pliers and insert by pushing the pin downwards until it reaches the bottom.



Sizes compatible with the chucking bit 2 mm to 5 mm ※ Please inquire about any other sizes.

- Inquiries: Fastener Department +81(Japan)47-392-2090

HIOS INC.,
111-6 Akiyama, Matsudo City, Chiba Prefecture, Tel: +81(Japan)47-392-2000

Service Center in Shenzhen

HIOS(Shenzhen)Co.,LTD
11CD Room, New Times Plaza, 1 Taizi Road, Shekou Nanshan District, Shenzhen Guangdong Province, CHINA, Tel:+86 755-26674278

www.hios.com

● Specifications and design are subject to change without ● Catalog details current as of October, 2008.

