



KT-384

THERMAL IMAGER



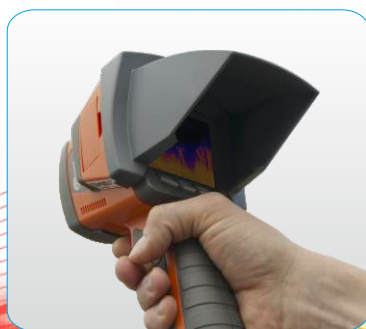
HD THERMAL
RESOLUTION
384x288

InfraFusion



**Four types of lenses
available!**

High quality
thermography
for industry and construction!



A fully radiometric camera which records temperature at each point of the image

Dew point measurement

Recording real image 1600 x 1200

Recording in the extended jpg format (all data is included in the file but the image can be viewed as simple graphics)

Infra Fusion technology – viewing a combined real and infrared image for effective locating of the measurement place

Video PAL/NTSC output to connect an external display or a recording unit and perform monitoring in real time

Simple and clear menu and programming - easily navigable even for beginners

Power supply: standard AA rechargeable cells or batteries, built-in charger

Image refreshing rate: 50/60 times per second
Digital zoom x2/x4

Vibration and shock resistant – stable, sharp images without a tripod

Recording of 1-minute voice comment for each image

Live IR video recording - record video to SD card or PC's HDD with date and time info for review and analysis

8 colour palettes available
Built-in laser sight and LED flashlight

3.6" LCD display 640 x 480

Compliance with EN61326-1

Large memory capacity (built-in memory + standard replaceable SD card) or a real-time transfer to a PC (USB) - unlimited recording capacity

Water and dust proof casing (IP54);
2m drop resistant

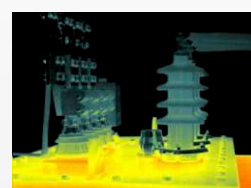
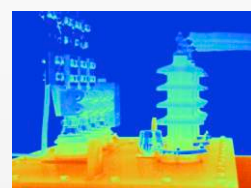
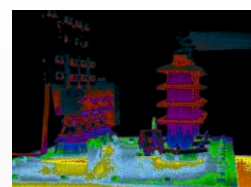
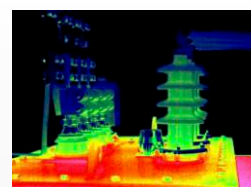
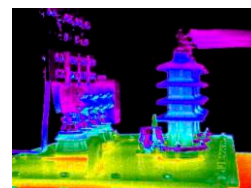
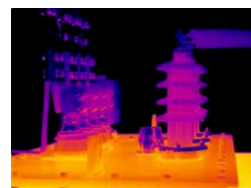
Technical specification	
Detector type	Non-cooled microbolometric matrix (384 x 288 pixel, 25µm)
Spectral range	8-14µm
Thermal sensitivity	≤0.08°C at 30°
Field of view/ focus distance	22° x 16° / 25mm
Focus	Manual
Electronic zoom	x2, x4
Recording of visual images	CMOS sensor, 1600 x 1200 pixel, "true colours" mode (24-bit)
External display	LCD TFT 3.6", high-resolution 640 x 480
Video output	PAL/NTSC
InfraFusion technology	Combining visual and IR image
Temperature range	-20°C to 400°C
Accuracy	±2°C or 2% reading
Emissivity	Adjustable from 0.01 to 1.00 (with 0.01 increments)
Measurement properties	Automatic correction for distance, relative humidity, atmospheric transmission and outside optical conditions
Optical transmission correction	Automatic, based on signals from sensors
Image storage	2 memory types: 4GB replaceable SD card and 150MB built-in memory
File format	JPG with thermograph data, visual image of the recorded area and voice comment
Voice comment	up to 60 sec
Classification	A1 GaInP semiconductor, diode laser
Power supply	AA rechargeable cells, AA alkaline batteries
Charging	Built-in charger
Battery operating time	More than 2 hours of continuous operation
AC operation	AC adapter - 110/230 VAC, 50/60Hz
Working temperature	-10°C to 50°C
Storage temperature	-20°C to 60°C
Humidity	Operating and storage: 10% to 95%, non-condensing
Casing	IP54, IEC 529
Shocks	Working: 25G, IEC 60068-2-29
Vibration	Working: 2G, IEC 60068-2-6
Communication	USB 2.0: transfer of image, measurement and voice to PC; video image live transfer, video output
Weight	0.79kg (with batteries)
Dimensions	112mm x 182mm x 252mm

Index:

Camera with 25mm lens - **WMXXKT384**
 Camera with 13mm lens - **WMXXKT384V13**
 Camera with 42mm lens - **WMXXKT384V42**
 Camera with 70mm lens - **WMXXKT384V70**



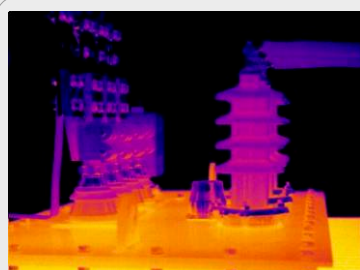
13mm lens - **WAADA013**
 25mm lens - **WAADA025**
 42mm lens - **WAADA042**
 70mm lens - **WAADA070**



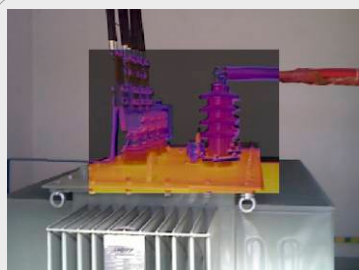
8 COLOR PAlettes
AVAILABLE

InfraFusion

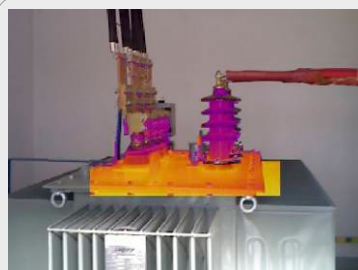
technology overlays
thermal image on the corresponding visual image.



THERMAL IMAGE



THERMAL IMAGE + REAL IMAGE



THERMAL IMAGE WITH THRESHOLD + REAL IMAGE



REAL IMAGE



ANALYSE AND REPORT RESULTS

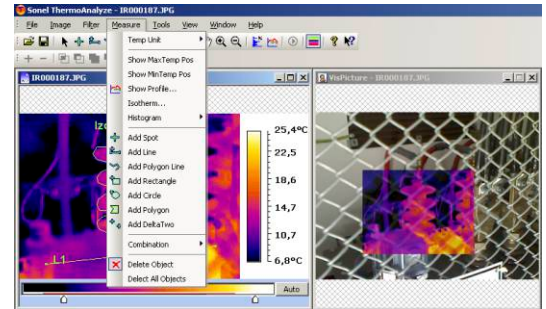
WITH THE ATTACHED SOFTWARE



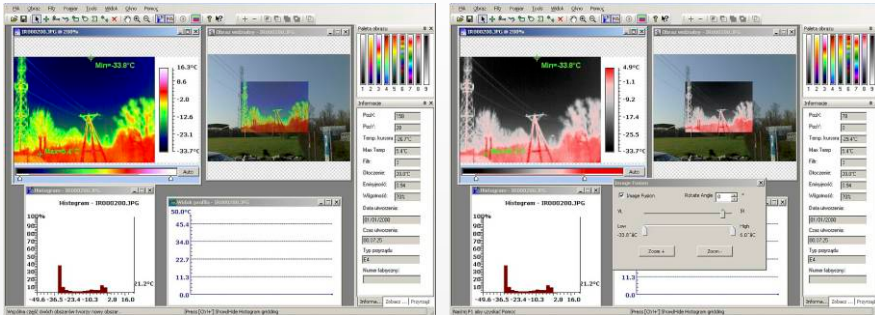
Correct the emissivity for the whole or a part of the thermograph – emissivity can be corrected separately for each selected image area.

Selection of reviewed areas – select a rectangular or oval area or an area of any shape. Then you can select the joint part of selected areas, combine or cut the areas, and move their borders.

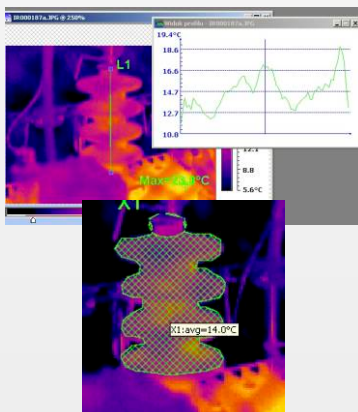
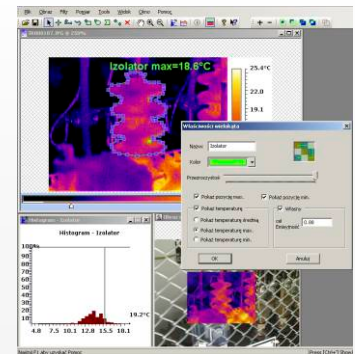
Read the temperature at any point – when the cursor is placed in the Information window, it displays continuously read temperature with current coordinates. Other saved information (maximum temperature, humidity, emissivity) is also available.



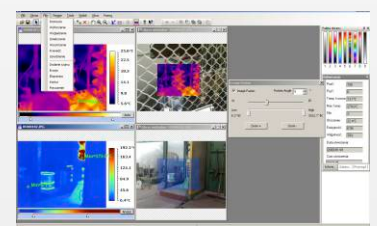
InfraFusion technology – thermograph is overlaid on a part of visual image, in a palette chosen by the user. The thermograph is overlaid with selected transparency for optimized presentation and marking of images, particularly when visual comparison of the area from the thermograph with the details on the visual image is difficult.



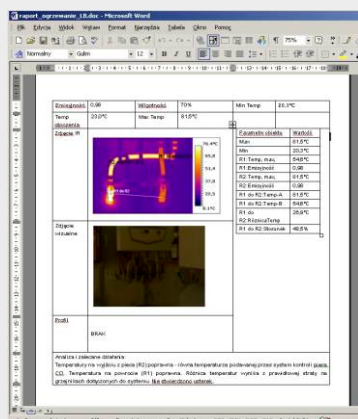
Automatic histograms for the whole image and each selected area; including graphic presentation of percent distribution of individual temperature ranges.



Determine and read the minimum, maximum and average temperature for the whole area or for each selected area. Select the section (straight or broken line) for which the averaged temperature can be determined and an automatic temperature distribution profile can be made.



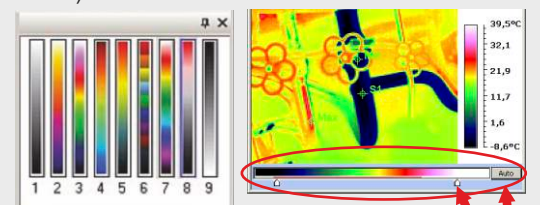
Sharpen, smooth, average, emphasize the edges of the object visible on the thermograph. Rotate or make a mirror image.

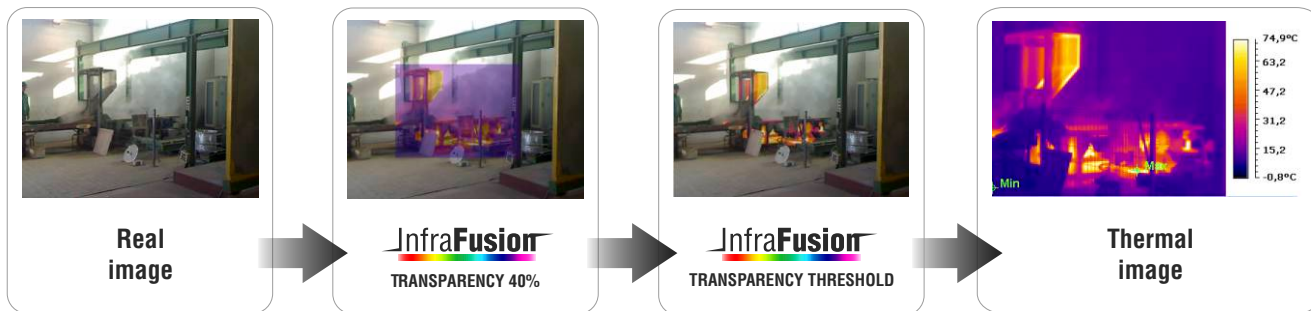


Create reports – also as an overlay for MS Word or Excel. Use the “drag and drop” method to transfer to the report all that you want to include in it: thermographs, corresponding visual images, analysis results for the whole or part of the image, histograms, etc.

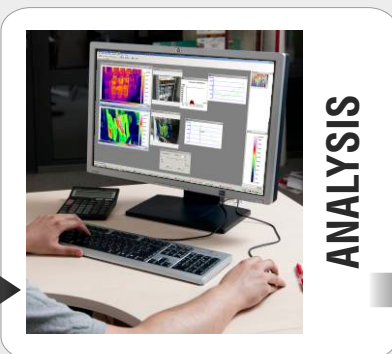
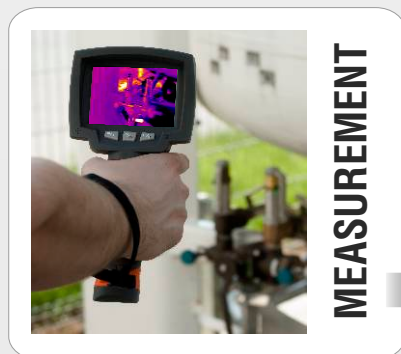
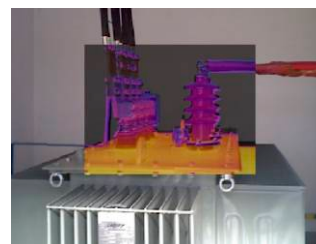
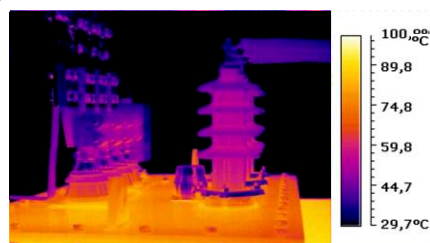
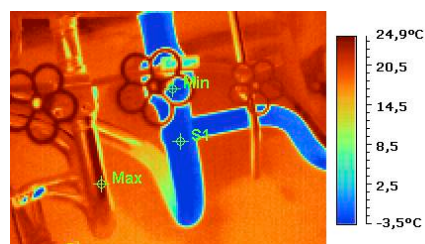
Save all corrections and characteristic points for further review at a later time.

Select an optimum colour palette (from among 9 palettes available in the software) for the best visual presentation of temperature changes. Define the temperature range for the best presentation of the distribution (auto or manual mode).





Unlimited
applications
in many areas!



The software licence is unlimited – you can use it on many computers simultaneously.