

ARM ADAPTERS

Treston introduces arm adapters in order to enable the use of Concept/TP accessories with double arms together with WB's AL2X profile. These adapters are available for both 40 mm and 60 mm arms:

- 890524-49, Arm adapter 40/AL2X (with M6 T-Nuts)
- 890525-49, Arm adapter 60/AL2X (with M6 T-Nuts)



Arm adapter 890525-49



Arm adapter 890525-49 and a double arm 880010-49

Delivery time is 5 working days from Jyväskylä factory.

Please note that these arm adapters do not fit with heavy or height adjustable arms.

The accessories with double arms can be found at Ergonomic workspaces catalogue pages 34-35.

For prices for all the adapters and delivery time for the special adapters, please contact customer service.

For more information, please contact Product Group Manager Jonna Patama, jonna.patama@treston.com,
Tel: +358 50 560 7917.

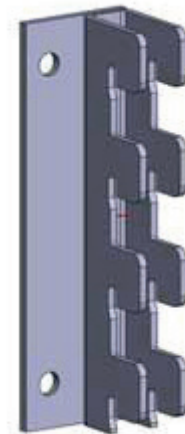
SPECIAL ARMS ADAPTERS

Adapters for 40 mm and 60 mm double arms are also available for WTR-profiles, but only upon special order:

- E821573-49, Arm adapter 40/WTR (with M8 T-Nuts)
- E821572-49, Arm adapter 60/WTR (with M8 T-Nuts).

Available also upon special order:

- E823459-49, Arm adapter MH/MA for uprights



Together with this adapter it is possible to attach MH (LCD bracket) or MA (LCD swivel arm) to Concept/TP/LMT/ TowerLine workbenches.

This adapter together with MH or MA also enables the use of tablet bracket MY with the uprights.

