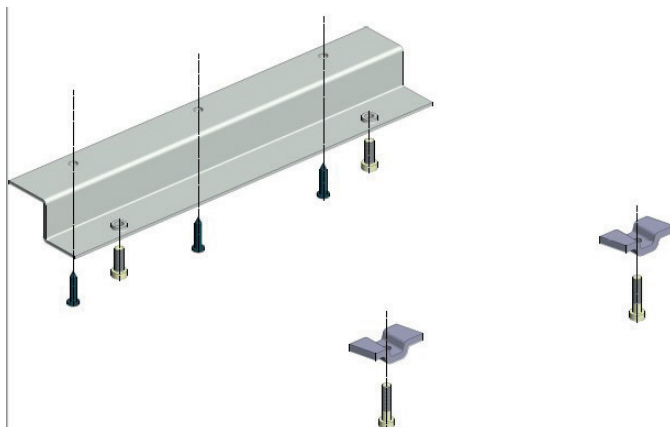


### NEW DRAWER UNIT FIXING SET FOR CONCEPT ALLEN KEY AND CRANK ADJUSTABLE WORKBENCHES

Along with the front list improvement of the Concept allen key and crank adjustable workbenches, the drawer unit fixing set will be renewed. Previously there were three different drawer unit fixing sets for various sizes and height adjustment method, but from now on there will be only one, 890653-49.

The drawer unit fixing to the Concept workbench frames is no longer depending on the ready made holes in the front list as the drawer unit will now be attached with locking parts to the C-profile and with screws to the bench top.



The new fixing set 890653-49 replaces the following:

- 860239-49
- 860930-49
- 860931-49

These old drawer unit fixing sets will be available until 31.12.2019.

### COMPATIBILITY

Old drawer unit fixing set cannot be used with Concept allen key and crank adjustable workbench frames which have the new C-profile as a front list. Also, the new drawer unit fixing set cannot be used with the workbench frames that have the old front list.

Therefore, during the transition period, customer service will add the new drawer unit fixing set 890653-49 free of charge to those Concept allen key and crank bench orders that have any of the following old drawer unit fixing set. This way the drawer unit can be fixed to the frame regardless of the model (old or new).

### AVAILABILITY AND PRICES

The new fixing set will be available during week 12, both from Turku and Genk warehouses. The price of the drawer unit fixing set 890653-49 is the same than of the fixing set for motor benches, i.e. 854463-49 (which will be still used with motor frames).

### ORDER PROCESSING RELATED INFORMATION

Please kindly contact Customer Service at [sales@treston.com](mailto:sales@treston.com)